

- ◻ k2tog
- ◻ ssk
- ▲ sl1, k2tog, pss0
- ⊗ yarn over (yo)
- ⊗ centered eyelet*
- ⊗ k 2 strands*
(*see below)
- ◻ no stitch

FAROESE chart

small Faroese Shawl:

(Chart above)

1 wheel Unspun Icelandic wool,
24" #9 to #10-1/2 needle.

Cast on (*German Twisted method*) 127 stitches.

Row 1 (and all odd-numbered rows): Knit. Now slip all first sts p'wise w/wif.

Row 2: K4, ssk, k49, k2tog, k13, ssk, k49, k2tog, k4 (123 sts on needle).

Row 4: K4, ssk, k47, k2tog, k13, ssk, k47, k2tog, k4 (119 sts on needle).

Row 6: K4, ssk, k1, (yo, ssk) 22x, k2tog, k13, ssk, (k2tog, yo) 22 times, k1, k2tog, k4 (115 sts on needle).

Row 8: K4, ssk, k43, k2tog, k13, ssk, k43, k2tog, k4 (111 sts on needle).

Row 10: (chart begins) k4, ssk, k13, (yo, ssk, k10)x6, yo, ssk, k12, k2tog, k4 (109 sts).

Row 12: k4, ssk, k10, (k2tog, yo, k1, yo, ssk, k7)x7, end last repeat **k10**, k2tog, k4.

Row 14: k4, ssk, k8, (k2tog, yo, k3, yo, ssk, k5)x7, end last repeat **k8**, k2tog, k4.

Row 16: k4, ssk, k6, (k2tog, yo, k5, yo, ssk, k3)x7, end last repeat **k6**, k2tog, k4.

etc... continue with chart to row 58 and back.

You have 7 gusset sts + 3 sts on either side. Work perpendicular cast-off across the top of the gusset (still slipping each first stitch p'wise): *k2, k2tog. Turn. slide a stitch from R needle to L and k2tog, k2. Repeat from * across gusset and weave 3 to 3. Block.

***Amy Detjen's 'centered eyelet':** above the (yo, dbl-dec, yo) from preceding row, slip 1, knit into 2nd stitch but do not remove from L needle, pss0, yo, k2tog. On next row, dip needle under horizontal strand running across yo & k both strands together.

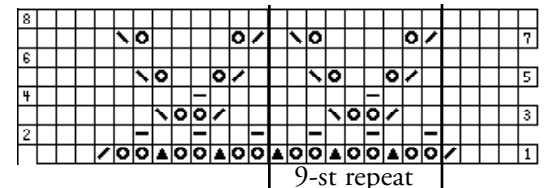
Huge thanks to Amy Detjen and Marilyn van Keppel for help with this design.

*from Meg Swansen's book, *A Gathering of Lace*

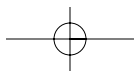
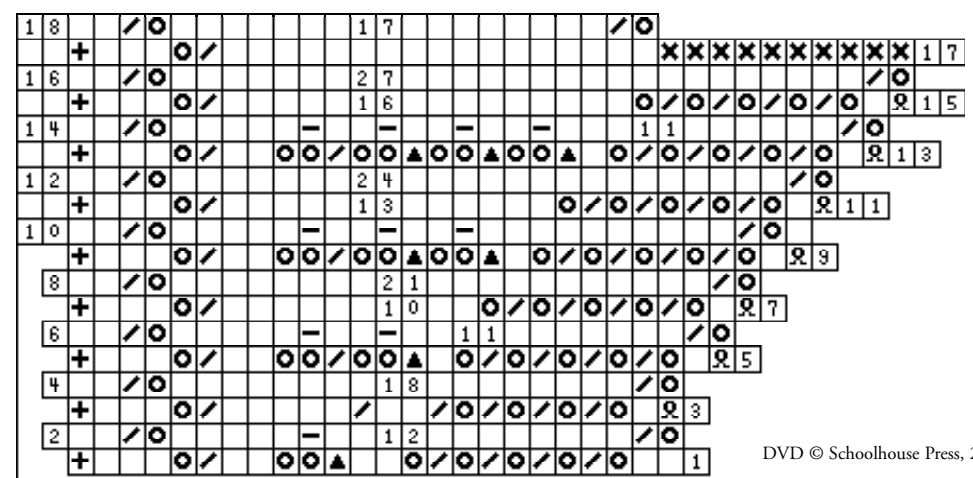
- ◻ blank = knit
- ◻ k2tog
- ◻ ssk
- ▲ sl1, k2tog, pss0
- ⊗ yarn over (yo)
- ⊗ yo, yo
- p1 into 1 of 2 yos
- ⊗ k into back of yo
- + unite last st to shawl
- ⊗ cast off

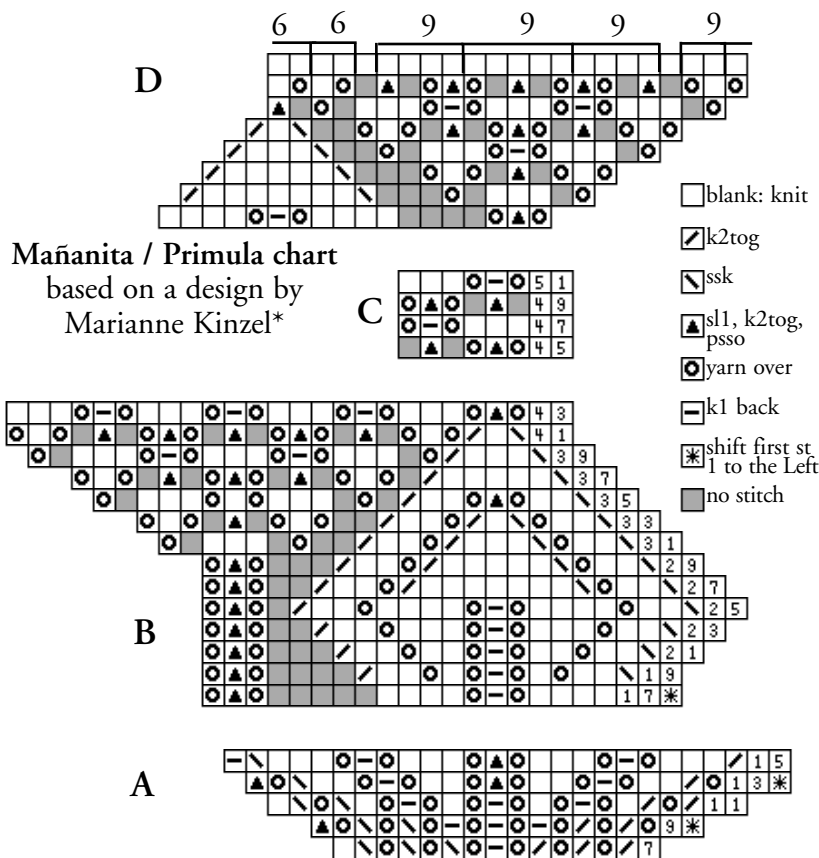
Lace Stole (charts below)

3 balls Lilac, 1 ball Silver Icelandic Laceweight Wool, 24" #9 to #10-1/2 needle. Invisibly cast on 70 sts. K 1 row. Follow chart **A** to wanted length. End with plain k row, during which decrease to 55 sts. Perpendicular lace border: **with Silver wool, cast on 23 sts. Turn and begin chart **B**, uniting last border stitch together with stole stitch. Cast off loosely. Pick up sts from cast on, decrease to 55 sts and repeat from **. Block.



STOLE charts A (above) and B (below)





Mañanita / Primula
Cast on 84, loosely
Knit one round plain
Rnd 1 yo, k2tog around
Rnds 2 & 3 knit plain
Rnd 4 *k1, yo, k2tog, yo. Repeat from * around (112 stitches).
Rnds 5 & 6 knit plain
Go to round 7 on chart A above and work each line 8x per rnd.
Every other rnd is plain knit.
Go to **B** (16x per rnd), **C** (64x per rnd) and **D** (32x per rnd).
Work section C two (or more)

times for a longer Mañanita.
NOTE the stars on rnds 9, 13 and 17: move beginning marker one stitch to the Left.
Crochet border as shown on DVD: *gather 2 sts chain 9, (gather 3 sts chain 9)x3, gather 2 sts chain 6, gather 3 sts chain 6. Repeat from * around.
I-Cord neck edge. Block

*This motif is a table-center in Marianne Kinzel's, *First Book of Modern Lace Knitting* (Dover Publications), available from Schoolhouse Press.

Mañanita / Peacock

- Cast on 80. Knit one round.
- Begin chart.
- Repeat each line 10x per round.
- Every other round is plain knit, except following the triple yo: work (k1, p1) 3x into each of the 3 yarn overs, resulting in 18 stitches.
- The greyed squares indicate No Stitch and are there to provide a visual of the motif.
- The numbers within the chart indicate how many plain knit stitches to work.

- blank square = knit
- ▤ k2tog
- ▥ ssk
- ▧ sl1, k2tog, pssso
- ⊙ yarn over (yo)
- ▨ k1 back
- ▩ knit into front & back of a single stitch
- no stitch
- ▭ purl into one of the 2 yos
- ⊞ slip
- ⊠ cast off

Here is a possible sideways lace edging for your *Mañanita*. Invisibly cast on 10 sts. Turn. K9, k last stitch together with raw shawl stitch. Turn. Begin row 1 of chart. Unite at ends of rows 2, 4, 6 & 8. Continue around; weave end to beginning.

